



FOR LEASE - 717-564-0832

Location Description

Address: 979 East Park Drive
Harrisburg, PA 17111
Cross Street: N/A
County: Dauphin
Municipality: Lower PaxtonTwp
Tax Parcel #: 35-074-058
Directions: I-83 to Union Deposit
Road exit, East Park
Drive, property on left
East Park Drive
Access:

Building Description

Total s.f./Avail s.f.: 7,000/7,000
Build Out: "As Is"
Class: B
Construction: Brick with block back-up
of Units: 1
Age: Built 1970
Roof Type/Material: Flat/Rubber
Floor Type/Material: Cement/Carpet & Vinyl
Floors: 1
Elevator: 0
Ceiling Hgt min/max: 9' /15'
Type: Acoustical tile
Sprinklers: No
Lighting: Fluorescent
HVAC/Source: Forced hot air; Central AC
Electric
Restrooms: Men's & Women's
handicapped
Business ID Sign: Yes
Parking Spaces:
Handicap Access: Yes
Parking Description: Parking in front and rear

Site Description:

Frontage: Along East Park Drive
Zoning: C-3 Commercial Mixed
Topography: Level
Public Transportation: Yes

Utilities/Services Paid Directly By

Water:	T	Janitorial:	T
Sewer:	T	Heat:	T
Trash:	T	HVAC Repairs:	T
Electricity:	T	Interior Repairs:	T
Air Conditioning:	T	Parking Maint:	T
Plumbing Repair:	T	Structure Repairs:	L
Lawn Maint:	T	Snow Removal:	T
Taxes:	T	Light Bulbs:	T
Insurance:	T		

T=Tenant; L=Landlord

Utility	Provider	Location	Size/Capacity
Electricity:	PPL	On Site	
Gas:	UGI	On Site	N/A
Water:	Public	On Site	N/A
Sewer:	Public	On Site	N/A

Comments

Special Features: Three overhead doors in back for receiving, warehouse space, reception area, private offices, conference room, break room, and training room
Remarks: Freestanding office building. Easy access off I-83 and Union Deposit Road.

Lease Rate/Terms

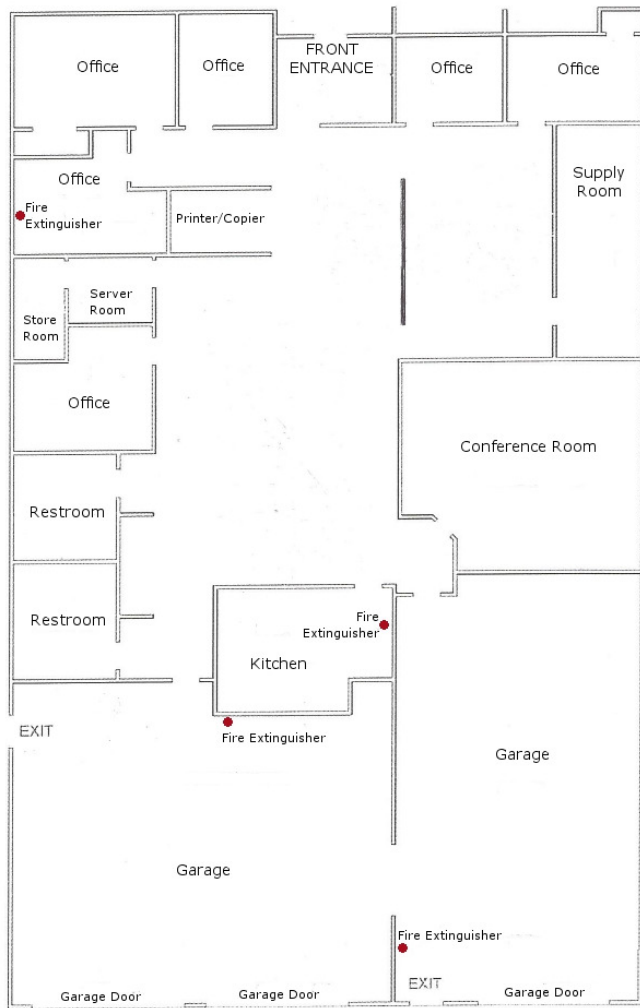
S.F.	Rate:	Term:	Comments:
7,000		5 years	



750 East Park Drive
Harrisburg, PA 17111
717-564-0832 Telephone
717-564-4759 Fax

Information deemed reliable, but no warranty is made as to the accuracy thereof, and it is submitted subject to errors, omissions, change of price or other conditions, prior sale or lease, or withdrawal without notice. All sizes approximate.

Floor Plan



Site View



LOCATION – 979 EAST PARK DRIVE, HARRISBURG, PA

