



FOR LEASE - 717-564-0832

Location Description

Address: 353 Markle Drive
 Harrisburg, PA 17111
 Cross Street: East Park Drive
 County: Dauphin
 Municipality: Swatara Township
 Tax Parcel #: 63-001-075
 Directions: I-83 to Union Deposit
 Road exit, East Park
 Drive to Markle Drive,
 property on left
 Access: Markle Drive

Building Description

Space Available: 1,867 s.f. Avail Ste 3
 Build Out: "As Is"
 Class: B+
 Construction: Brick masonry
 # of Units: 3
 Age: Built 1997
 Roof Type/Material: Flat/Rubber
 Floor Type/Material: Carpet/Vinyl
 Floors: 1
 Elevator: 0
 Ceiling Hgt min/max: 10' /10'
 Type: Acoustical tile
 Sprinklers: No
 Lighting: Fluorescent
 HVAC/Source: Forced hot air; central
 AC / Gas and Electric
 Restrooms: Men's & Women's
 handicapped
 Business ID Sign: Yes
 Parking Spaces: 4.7/1,000 s.f.
 Handicap Access: Yes
 Parking Description: In Common

Site Description:

Frontage: Visible from I-83
 Zoning: C-G Commercial
 General
 Topography: Level
 Public Transportation: Yes

Utilities/Services Paid Directly By

Water:	T	Janitorial:	T
Sewer:	T	Heat:	T
Trash:	T	HVAC Repairs:	T
Electricity:	T	Interior Repairs:	T
Air Conditioning:	T	Parking Maint.	T
Plumbing Repair:	T	Structure Repairs:	L
Lawn Maint:	T	Snow Removal:	T
Taxes:	T	Light Bulbs:	T
Insurance:	T		

T=Tenant; L=Landlord

Utility	Provider	Location	Size/Capacity
Electricity:	PPL	On Site	
Gas:	UGI	On Site	N/A
Water:	Public	On Site	N/A
Sewer:	Public	On Site	N/A

Comments

Special Features: Located on the southeast side of East Park Drive, the elevation of this building offers panoramic views to the south and west.

Remarks: The East Park Drive area has become the location of choice for some of Harrisburg's leading businesses.

Lease Rate/Terms

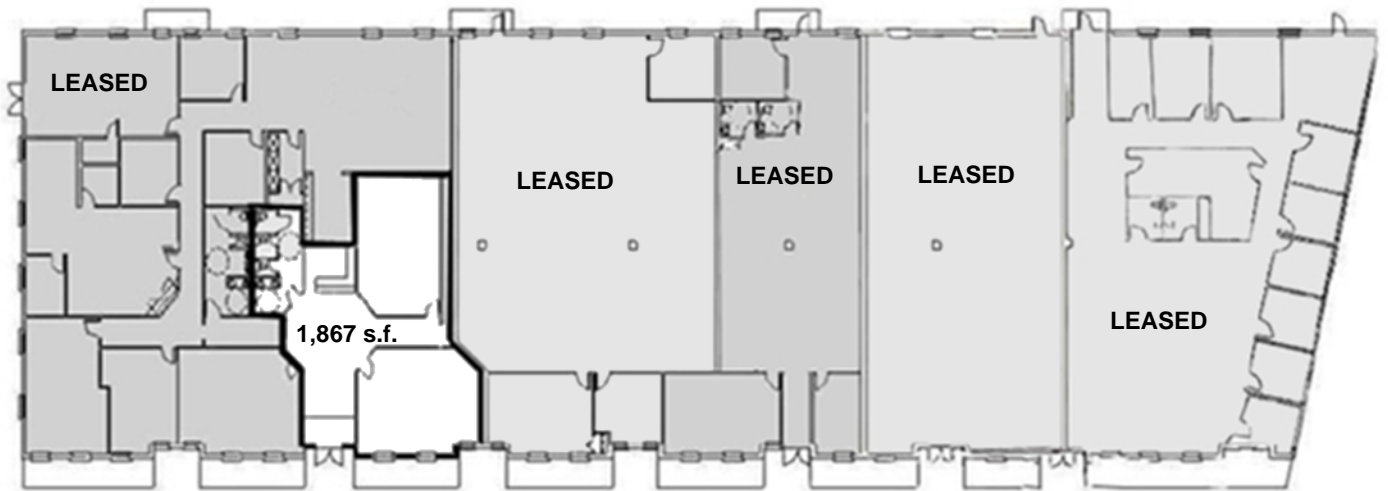
S.F.	Rate:	Term:	Comments:
1,867 s.f.		5 Years	Ste 2



750 East Park Drive
 Harrisburg, PA 17111
 717-564-0832 Telephone
 717-564-4759 Fax

Information deemed reliable, but no warranty is made as to the accuracy thereof, and it is submitted subject to errors, omissions, change of price or other conditions, prior sale or lease, or withdrawal without notice. All sizes approximate.

FLOOR PLAN



LOCATION – 353 MARKLE DRIVE, HARRISBURG, PA

